



# **HPE Aruba Networking AP-600H-MNT1 Mount Kit**

Installation Guide



**Hewlett Packard**  
Enterprise

## Copyright Information

© Copyright 2023 Hewlett Packard Enterprise Development LP.

## Open Source Code

This product includes code licensed under certain open source licenses which require source compliance. The corresponding source for these components is available upon request. This offer is valid to anyone in receipt of this information and shall expire three years following the date of the final distribution of this product version by Hewlett Packard Enterprise Company. To obtain such source code, please check if the code is available in the HPE Software Center at <https://myenterpriselicense.hpe.com/cwp-ui/software> but, if not, send a written request for specific software version and product for which you want the open source code. Along with the request, please send a check or money order in the amount of US \$10.00 to:

Hewlett Packard Enterprise Company  
Attn: General Counsel  
WW Corporate Headquarters  
1701 E Mossy Oaks Rd, Spring, TX 77389  
United States of America



The AP-600H-MNT1 mount kit is for securing a supported access point to a single-gang wall box or a flat surface.

## Package Contents

**Table 1:** *Package Contents*

Item	Quantity
AP-600H-MNT1 Mount bracket	1
#6-32 x 1 Phillips drive screw	2
M2.5 x 14 T8H security type tamper proof Torx screw	1
M2.5 x 6.5 T8H security type tamper proof Torx screw	1
Phillips drive wood screw	2
Plastic anchor	2

## Customer Supplied Equipment

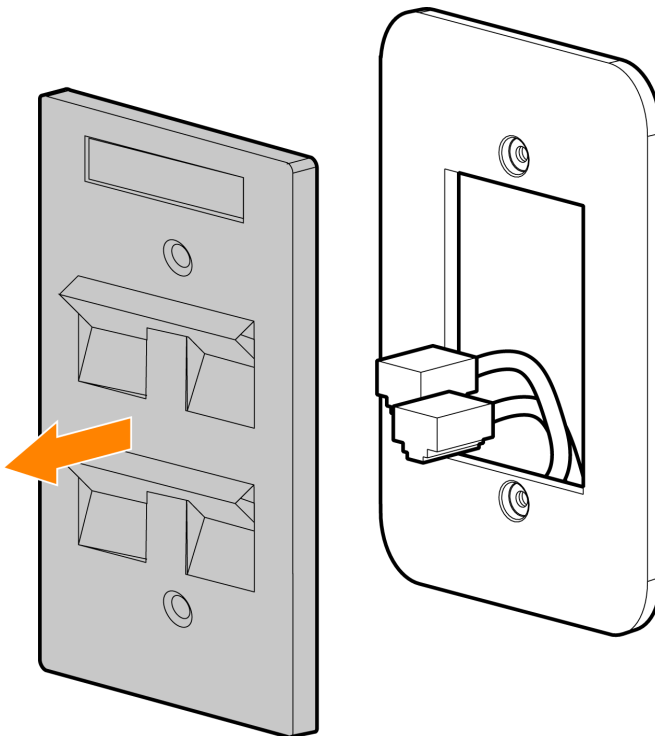
- #1 Phillips screwdriver
- T8H screwdriver
- Electric drill with drill bits
- Hammer

## Installation with Wall Box

To mount an access point on a wall box, follow these steps:

1. If the wall box is not already exposed, unscrew and remove the existing wall plate.

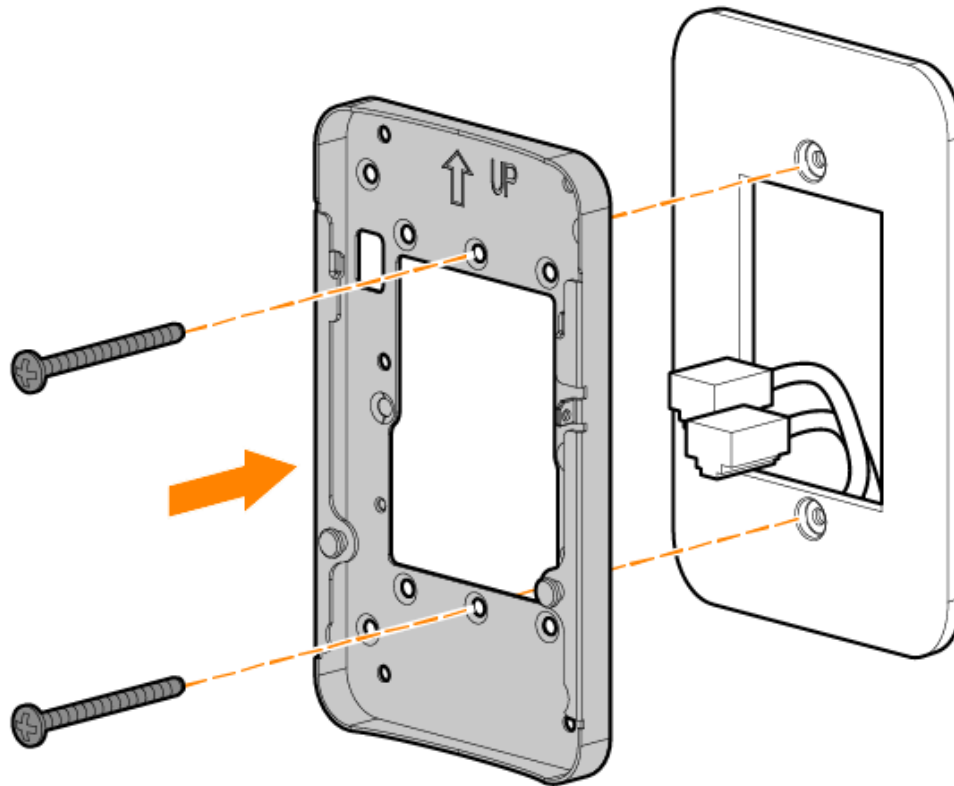
**Figure 1** *Removing Existing Wall Plate*



2. If needed, detach any RJ45 cables by unclipping the connectors from the wall plate.
3. Align the screw holes on the mount bracket with the corresponding holes on the single-gang wall box.

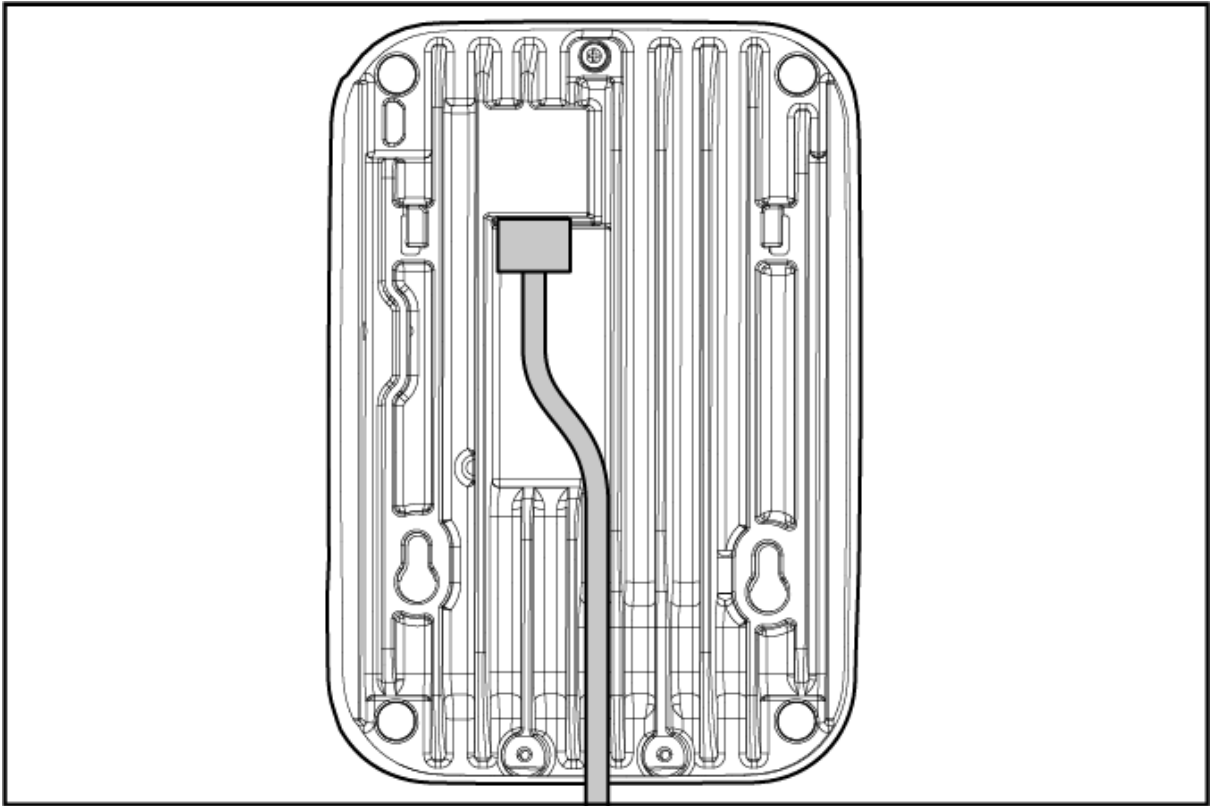
4. Screw the mount bracket onto the wall box using the two #6-32x1 Philips screws.

**Figure 2** *Attaching Mount Bracket to Single-gang Wall Box*



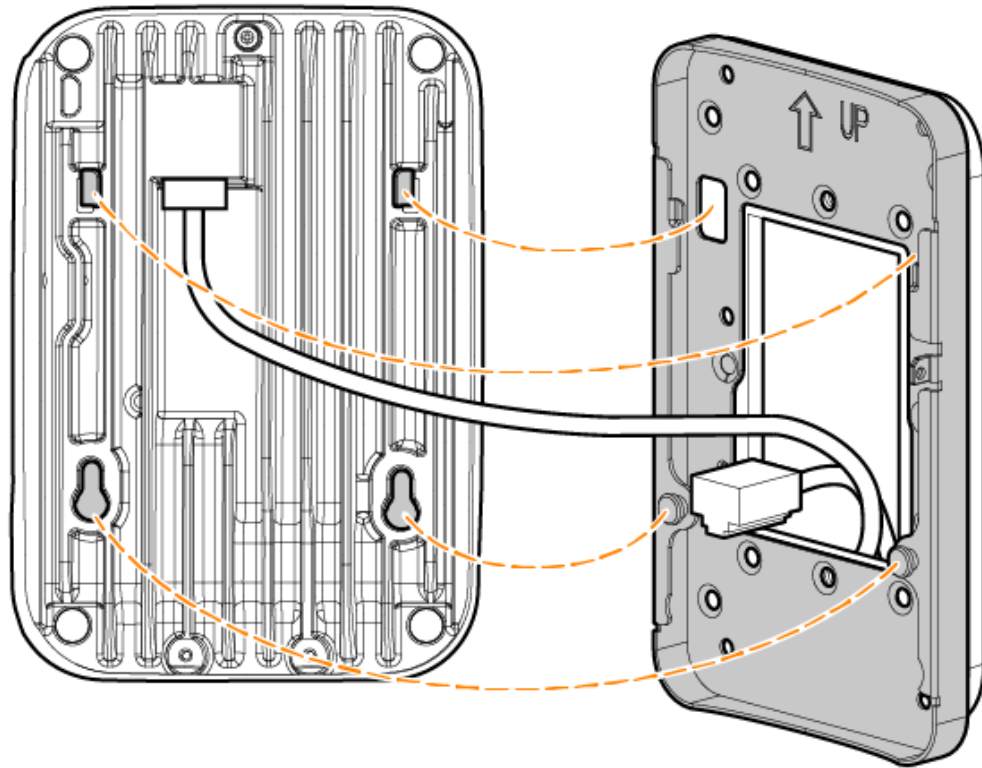
5. Route an active Ethernet cable to the E0 port located on the back of the access point. Make sure the Ethernet cable is in the groove on the bottom of the access point.

**Figure 3** *Routing Ethernet Cable*



6. Align the slots and holes on the back of the access point against the guide posts and slots on the mount bracket, and then slide the access point down to attach the access point to the mount bracket.

**Figure 4** *Aligning Slots and Holes on Access Point with Mount Bracket and Slide Down*

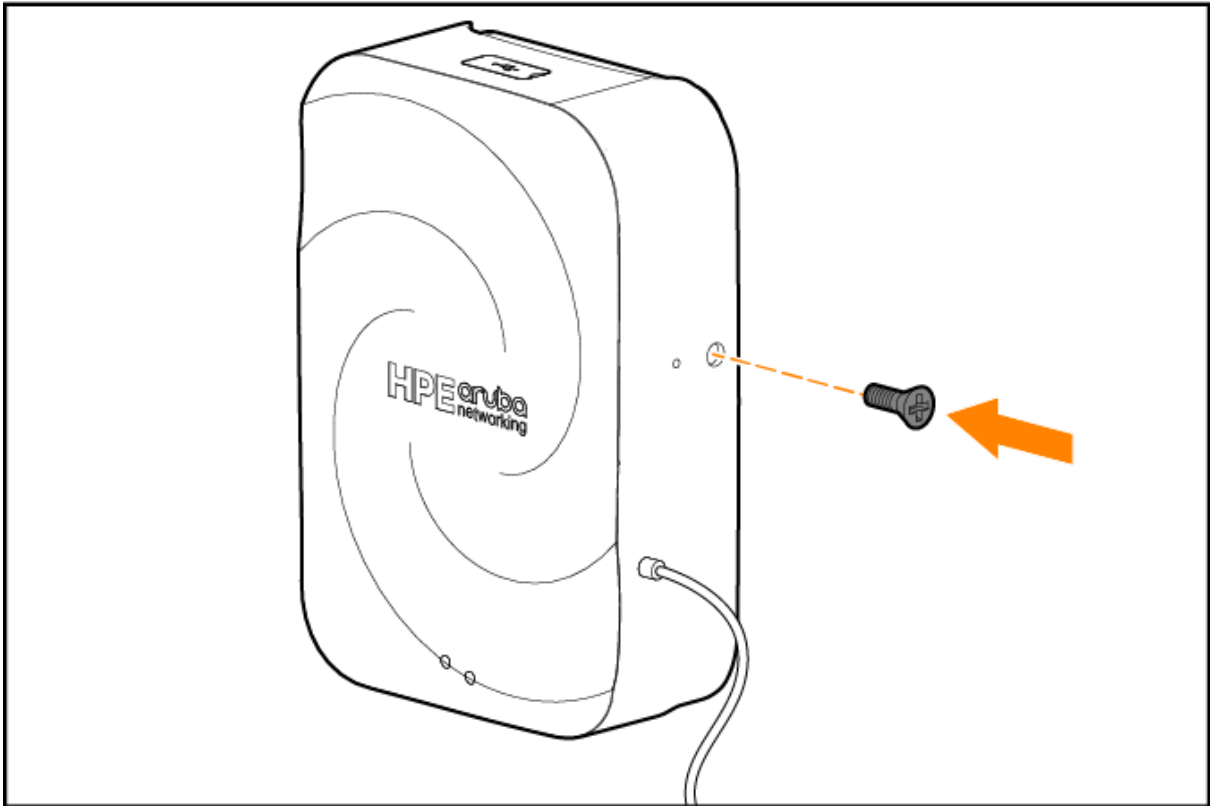


7. Insert and fasten the M2.5 x 14 T8H Torx screw or the M2.5 x 6.5 T8H Torx screw to the security screw hole on the access point .



The M2.5 x 14 T8H Torx screw and the M2.5 x 6.5 T8H Torx screw are provided for different access points. The M2.5 x 14 T8H Torx screw is for the access point with long security screw hole, such as 600H series access points; while M2.5 x 6.5 T8H Torx screw is for the access point with short security screw hole, such as 500H series access points.

**Figure 5** *Fastening T8H Torx Screw to Security Screw Hole*



8. (Optional) If the access point requires a DC power adapter, a power cable may be inserted into the socket located on the side of the access point.

## Installation on Flat Surface

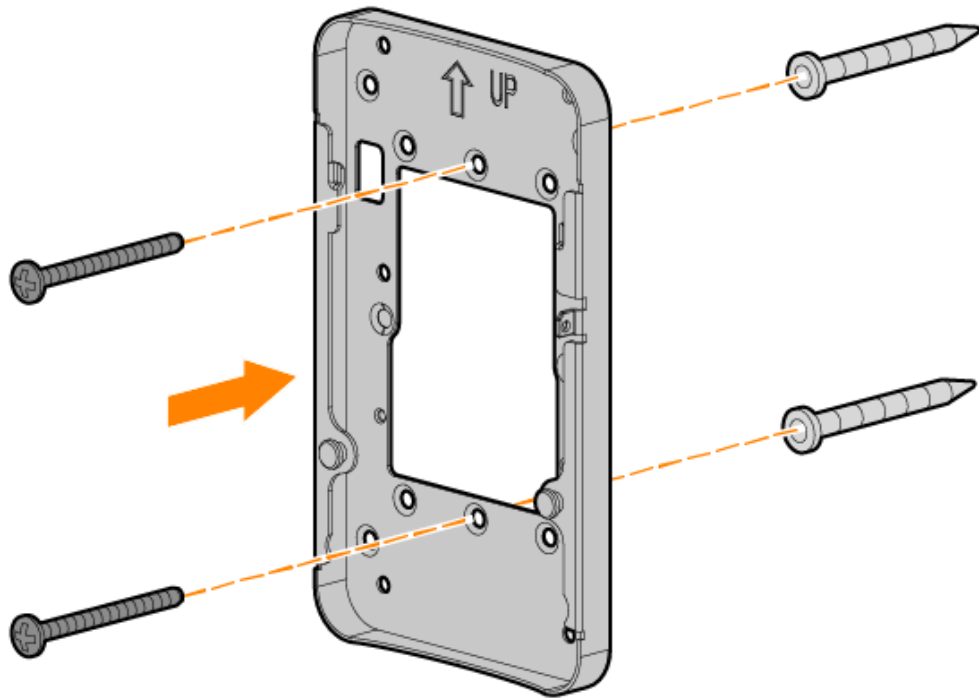
To mount an access point to a flat surface, follow these steps:

1. Mark two 4mm pilot holes on the wall and drill using an electric drill.
2. Place the two plastic anchors over the holes and tap them firmly until they are fully inserted in the wall.
3. Align the mount bracket with the plastic anchors inserted in the wall.



4. Screw the two wood screws into the plastic anchors to secure the mount bracket against the wall.

**Figure 6** *Screwing Mount Bracket Directly to Solid Wall*



5. Repeat the step 5 to step 8 in the [Installation with Wall Box](#) section to complete the installation.